

### Information

©Opening Hours: 9 a.m.-5 p.m. : Open year round  
 ©Admission Fee  
**Rotating Exhibition Period** Adults (18 years and over): 700 yen  
 Groups: (20 or more people) 560 yen  
**Other Periods** Adults: 490 yen Groups: 390 yen  
 Parking: Buses: 4, Standard-sized cars: 42  
 (including two disabled parking spots)



高知県立坂本龍馬記念館  
 The Sakamoto Ryoma Memorial Museum

830 Urado-shiroyama, Kochi City, Kochi 781-0262  
 TEL.088-841-0001 FAX.088-841-0015  
<http://www.ryoma-kinenkan.jp> ✉[ryoma@ryoma-kinenkan.jp](mailto:ryoma@ryoma-kinenkan.jp)

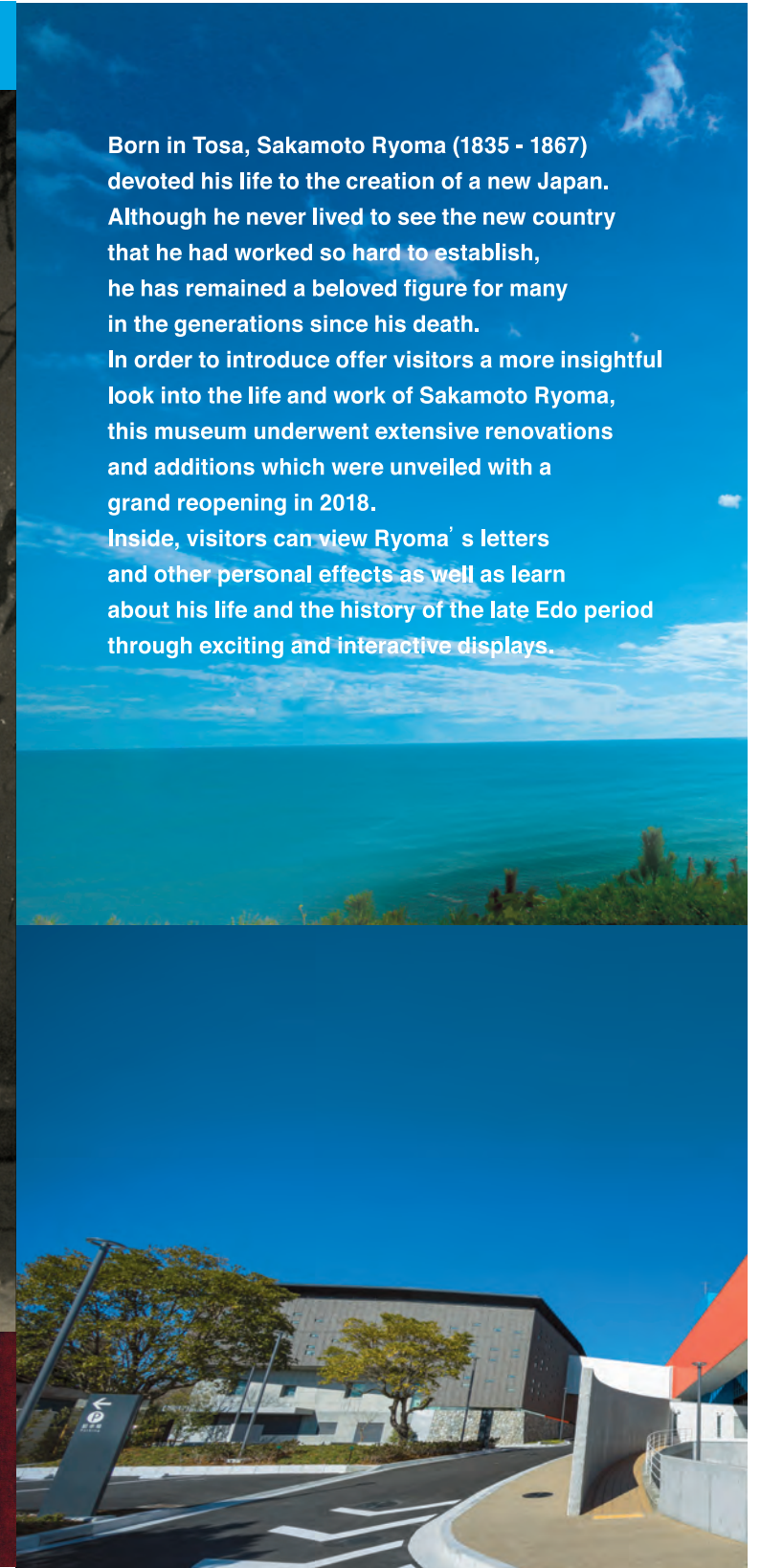
English 英語

### OPENING THE DOOR ON RYOMA



Born in Tosa, Sakamoto Ryoma (1835 - 1867) devoted his life to the creation of a new Japan. Although he never lived to see the new country that he had worked so hard to establish, he has remained a beloved figure for many in the generations since his death. In order to introduce offer visitors a more insightful look into the life and work of Sakamoto Ryoma, this museum underwent extensive renovations and additions which were unveiled with a grand reopening in 2018. Inside, visitors can view Ryoma's letters and other personal effects as well as learn about his life and the history of the late Edo period through exciting and interactive displays.

高知県立坂本龍馬記念館  
 The Sakamoto Ryoma Memorial Museum



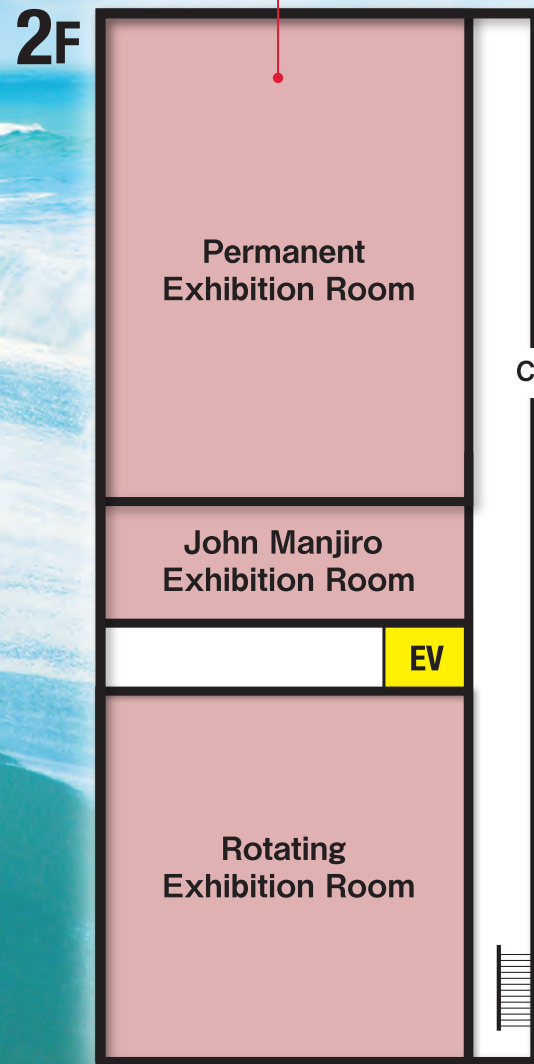
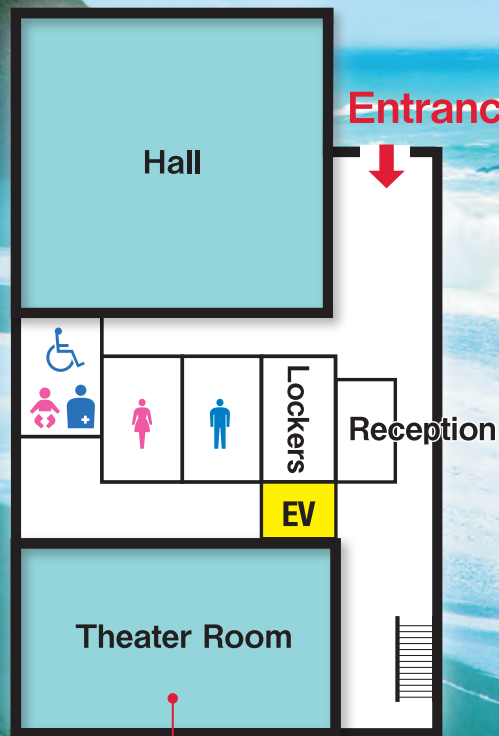
# New Wing

The New Wing offers a Theater Room (1F), where visitors can be introduced to Ryoma with a short film, and a Permanent Exhibition Room (2F), which assembles a variety of Ryoma-related materials and personal effects in one room. In addition, visitors can explore the John Manjiro Exhibition Room (2F) and the Rotating Exhibition Room (2F).

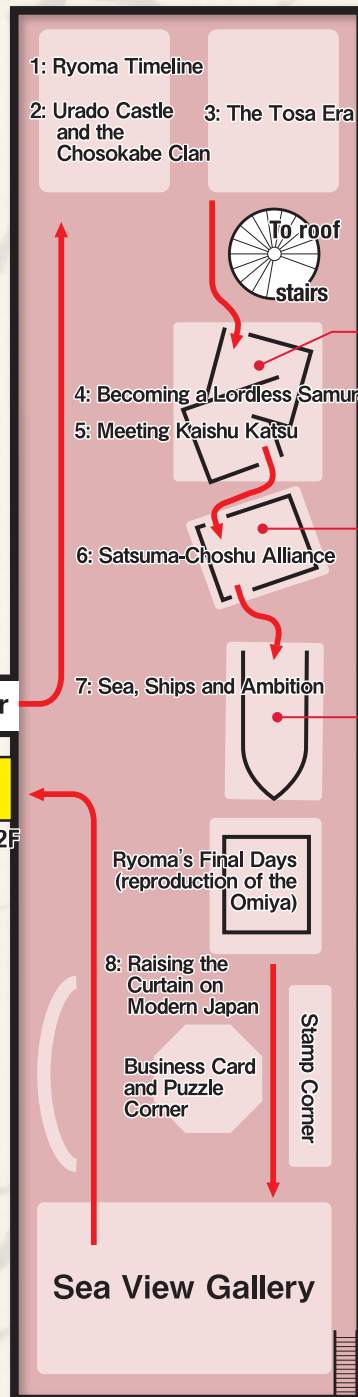
## UNDERSTANDING RYOMA



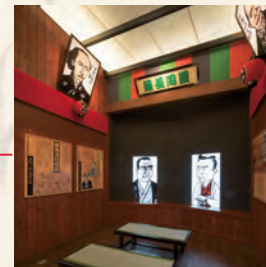
**1F** Hall, WC (incl. multi-functional toilets) Lockers



Connecting Corridor



**2F** Bakumatsu Exhibition



**mid 2F** Ocean-view Rest Area (incl. vending machines)



# Main Building

The interior of the Main Building has been renovated, and a new Bakumatsu Exhibition (2F) interactive display has been installed. A Bakumatsu Period Photo Studio (B2F) has also been installed which displays the photographs of roughly 130 people who lived at the same time as Ryoma.

## FUN WITH RYOMA



**B1F** Library  
WC (incl. multi-functional toilets)  
First-Aid Office, Nursing Room



**B2F**

